
Children's Investment Fund Newsletter



Mass Audubon's "Nature Nook" at the Boston Nature Center

Dear Colleagues and Partners,

This Spring, we hosted our "Let's Take It Outside" training on outdoor play spaces at the Mass Audubon's Boston Nature Center, which has been a great partner as we work with nonprofit early childhood education and out-of-school time programs developing enriching space outdoors for children. We also held a training in Worcester on the [Design Guidelines](#) we created jointly with the Massachusetts Department of Early Education and Care (EEC) and were pleased to generate good discussion with EEC licensors on high-quality design.

We said [farewell to two colleagues](#) at the EEC -- Commissioner Tom Weber and Deputy Commissioner for Administration/Chief Financial Officer Bill Concannon. I testified at the June EEC Board meeting to share our best wishes and gratitude for their support of our work over the years. We look forward to working with the new EEC Commissioner, Samantha Aigner-Treworgy, when she begins this summer.

Best,



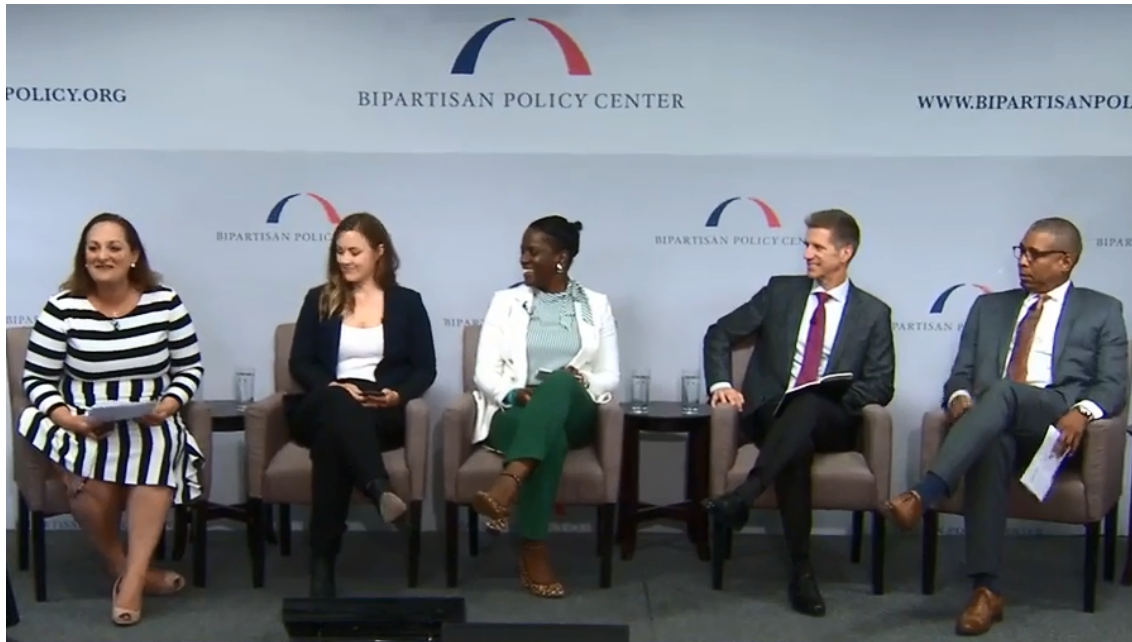
Theresa Jordan
Director of Children's Facilities Finance

Events:

Bipartisan Policy Center Panel Event

In May, Theresa Jordan was a panelist for the Bipartisan Policy Center's event and release of the report, [From the Ground Up: Improving Child Care and Early Learning Facilities](#). The report highlights Children's Investment Fund as one of the few organizations in the country developing early childhood education facilities and the [Building Stronger Centers](#) training as the only training of its kind in the nation. On the panel, Theresa spoke about the role of training and technical assistance for non-profit early childhood education and out-of-school time providers.

The Bipartisan Policy Center is spearheading an effort requesting \$250 million in the federal budget for improving child care facilities nation-wide. Read more and check out the recorded webcast of the event [here](#).



**From the Ground Up:
Improving Child Care and
Early Learning Facilities**

EARLY CHILDHOOD, MAY 2019

Overview

Increasingly, discoveries in neuroscience show that a child's earliest years are crucial to their social, emotional, physical, and cognitive development, and that the settings in which they learn, play, and grow have an enormous impact on their future development. High-quality and developmentally appropriate environments promote healthy behaviors, independence, and social-emotional skills in young children. Yet, too often, the conversation about child care quality focuses on workforce and curricula, and rarely does it include the physical environment in which children are cared for.

Nearly 35 million children under age 6 live in households in which all parents work, leaving these children in need of high-quality child care. The physical infrastructure of these spaces has been long neglected, and parents are forced to place their children in substandard settings. It is critical to recognize that high-quality environments lead to better outcomes for young children and that the nation's children cannot wait for greater investments in early learning infrastructure that supports their development.

To support city- and local-level officials in addressing their child care facility-related challenges, this catalog provides examples of federal, state, and local-level models across government, philanthropy, and public-private partnerships.

Cover Photo: Mission Child Care Consortium, San Francisco, California
Thanks to the Tucker Investment Fund

"Let's Take It Outside" Training

In June, the Fund hosted the "Let's Take It Outside" training on developing natural play spaces for children. Held at the Mass Audubon's Boston Nature Center (BNC) for 14 provider agencies, the training featured a tour of the BNC's "Nature Nook" and individualized feedback from architects on design plans. Presenters focused on the social, emotional and health benefits of outdoor play and included ideas, images, and costs of natural play space elements.

Children's Investment Fund created the "Let's Take It Outside" training in 2013 and has since trained over 100 individuals on how to create high-quality outdoor environments.



Attendees at the June 2019 "Let's Take It Outside" training listen to a presentation on the impact of outdoor play on child development.



Claire Harris, Preschool Director at the Boston Nature Center, gives a tour of the "Nature Nook," an 8,600 square-foot outdoor play space designed for children.

Planning to Improve your Facility?

The Fund offers [predevelopment loans](#), [acquisition loans](#), and [permanent financing](#) as well as invaluable technical assistance to you and your team.

For more information, contact **Theresa Jordan** at 617-727-5944, ext. 107 or tjordan@childrensinvestmentfundma.org.

Partnership News:

ROCKLAND
TRUST

Charitable Foundation

Rockland Trust awarded Children's Investment Fund with a \$15,000 grant to continue the work of the Early Education and Out of School Time Capital Fund (EEOST) evaluation study. We are grateful for Rockland Trust's several years of support for this effort.



Richard Muraida, Senior Vice President at Rockland Trust and CEDAC/CIF Board Member, with Kira Taj of Children's Investment Fund.

In the News:

Children's Investment Fund Board member Prabal Chakrabarti wrote a poignant article in the Boston Globe entitled [Loss, grief, and redemption through adoption](#).

The Boston Federal Reserve released the report [High-Quality Early Child Care: A Critical Piece of the Workforce Infrastructure](#) as part of its "Early Child Care for Working Parents" initiative.

The Board of Early Education and Care [voted to appoint](#) Samantha Aigner-Treworgy as the new Commissioner of the Department of Early Education and Care.

Funding Opportunity:

Franklin Square House Foundation

Applications to the Franklin Square House Foundation's [childcare grant round](#) are due **July 17, 2019**. The Foundation is a unique source of funding for capital projects.

Donate



Share



Tweet



Forward

Copyright © 2019 CEDAC/Children's Investment Fund, All rights reserved.

Want to change how you receive these emails?
You can [update your preferences](#) or [unsubscribe from this list](#).