



Children's  
Investment Fund

AN AFFILIATE OF CEDAC

# INCLUSIVE FUTURES

## Capital Grant Program

Information Session – April 5, 2022



# AGENDA

- Grant overview and eligibility
- Funding categories and tips
- Key dates
- Q&A

# GRANT OVERVIEW

- Funded by Liberty Mutual Foundation
- Capital grants focused on accessibility
- \$50,000 - \$100,000 per site
- Two grant rounds – spring 2022 and spring 2023

# ELIGIBILITY

- Non-profit, 501c3
- Center-based, EEC-licensed
- Located in city of Boston
- ECE care and/or OST programming
- 25% enrollment is low-income children
- Own the site or have a lease term of 5+ years



# THE REVIEW TEAM

## Children's Investment Fund

Theresa Jordan, Alicia Toney, Kira Wilke

Josh Safdie, KMA

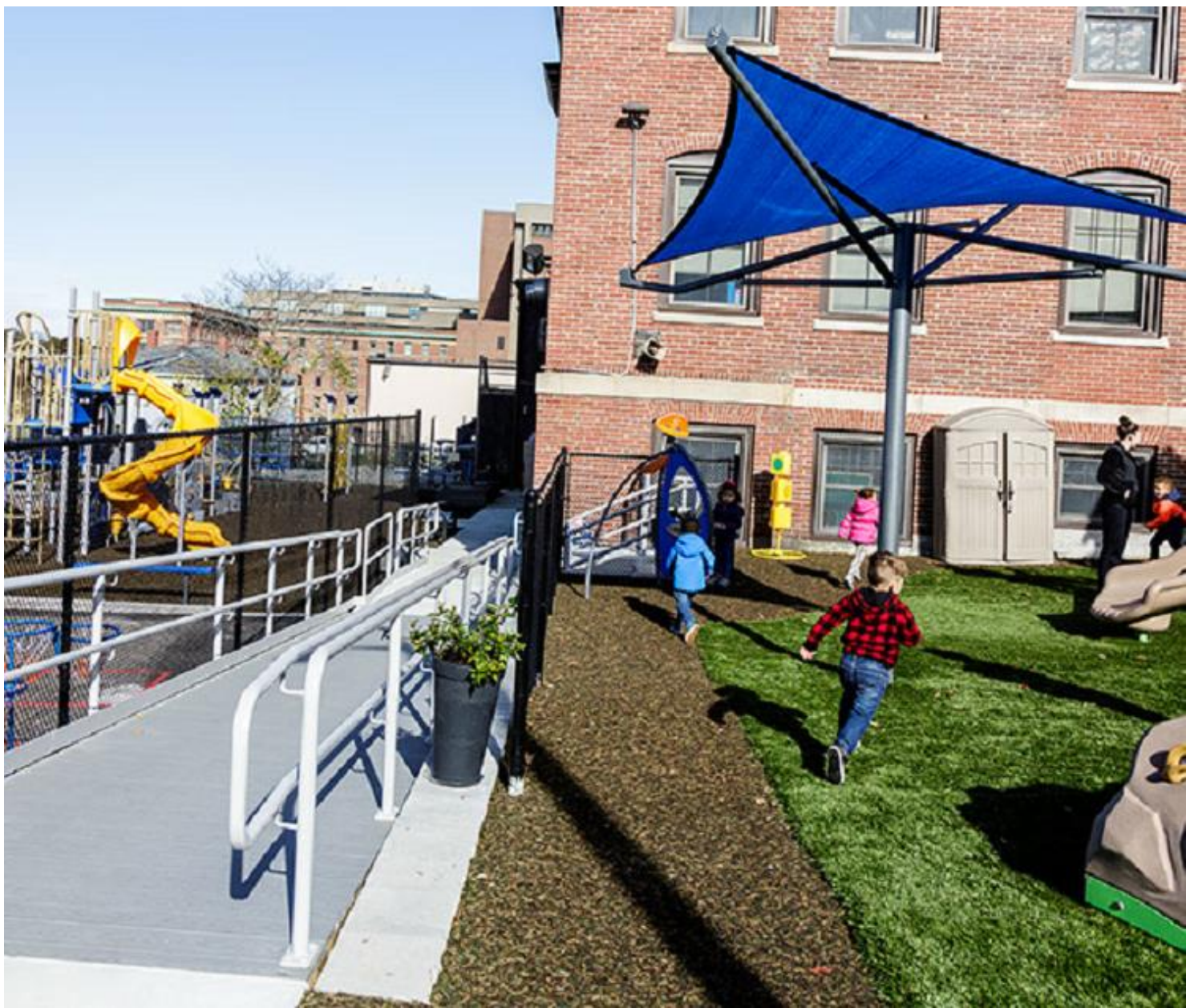
Amenyonah Bossman, Bossman Construction Management

Shara Lewis, Shara Lewis Associates

# FUNDING CATEGORIES

1. Outdoor play space renovation targeting access and inclusion for children with disabilities



























# FUNDING CATEGORIES

## 2. Exterior building access and circulation







# FUNDING CATEGORIES

## 3. Interior access and circulation











# FUNDING CATEGORIES

## 4. Bathroom accessibility









# FUNDING CATEGORIES

5. Furnishings and equipment to support children with disabilities







# ACCESSIBILITY CHECKLIST



## Accessibility Checklist for ECE/OST Centers

This is an informal guide to help you assess some features of your early childhood education and/or out-of-school time space, based on Americans with Disabilities Act (ADA) guidelines and best practices. Please note that these are select components of accessibility and are not meant to cover all aspects of ADA compliance. For a more complete assessment, we strongly suggest having an architect or design professional visit your site in-person.

### SITE HISTORY

	YES	NO	N/A	Comments
Has an ADA survey or accessibility assessment ever been done for your site? Sometimes a Capital Needs Assessment will look at accessibility as well.				
Have any ADA improvements been made to the site in the past?				
Have there ever been any accessibility-related complaints made by parents, staff, or community members about the site?				

### ENTRANCE

	YES	NO	N/A	Comments
Is there at least one route from site arrival points (parking, public sidewalks, and public transportation points) to the building's entrance that does not require the use of stairs?				
• Is the route stable, firm, and slip-resistant?				

# BEST PRACTICE CAPITAL PROJECT PLANNING

Meet with a design professional to create specifications for what you need and check for ADA compliance



Reach out to several contractors to gather cost estimates



Build a budget based on your informed cost estimates

# KEY DATES

**April 11, 20, 26**

[“Office hour” feedback sessions](#) via Zoom

**May 18, 4pm**

Application deadline

**June**

In-person site visits for selected applicants

**July 29**

Grant awards announced

# APPLICATION



## Inclusive Futures Capital Grant Program

**LOAN PRODUCTS**  
**EEOST CAPITAL FUND**  
**INCLUSIVE FUTURES**  
**CAPITAL GRANTS**

The Children's Investment Fund is awarding capital grants to improve the accessibility of early childhood education facilities in Boston. Funding for this grant program is made possible by the Liberty Mutual Foundation.

Non-profit early childhood education and care centers can apply for capital grants between \$50,000 – \$100,000. Please see all application materials below for eligibility and other details.

<https://cedac.org/cif/financing/inclusive-futures-capital-grant-program/>

# SCORING CRITERIA

- Project Impact
- Documentation of Costs
- Feasibility
- Project Readiness
- Organizational Capacity
- Financial Stability
- Preference Points
  - 50%+ low-income enrollment
  - Addressing outdoor space
  - Minority Business Enterprise (MBE) participation (quotes, consultants)
  - Applicant organization is led by people of color



# MINORITY BUSINESS ENTERPRISE (MBE) DIRECTORIES

- [Massachusetts Supplier Diversity Office](#)
- [City of Boston Certified Business Directory](#)
- [Massachusetts Housing Investment Corporation](#)

*Firms do not need to be officially certified; they can self-identify as MBE firms*

# QUESTIONS & ANSWERS

THANK YOU

Connect with us!

Contact Kira Wilke

[kwilke@childrensinvestmentfundma.org](mailto:kwilke@childrensinvestmentfundma.org)

617-727-5944 ext. 140



Children's  
Investment Fund

AN AFFILIATE OF CEDAC